



TUBOX

insole and counter

**INSOLES AND COUNTERS
RECYCLED & RECYCLABLE**

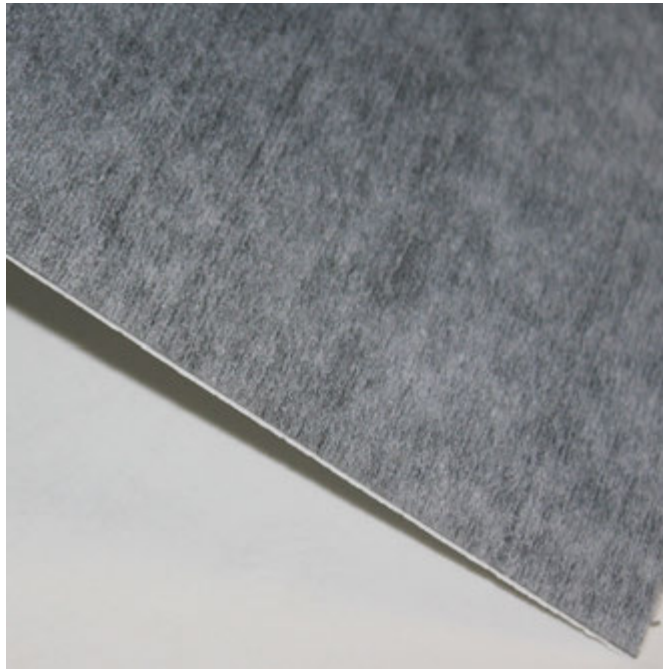
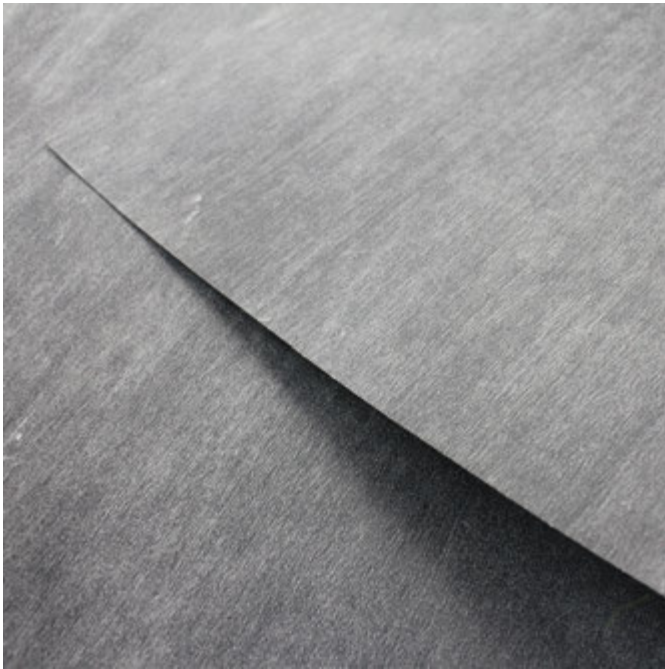
WHAT IS TUBOX?



Tubox is a patent pending sustainable, replacement of insole board, cellulose, MDF and similar materials.

Tubox is sustainable, cost-effective, recyclable plastic sheet made from hard-to-recycle composite materials for the footwear industry. It is composed of a proprietary blend of polypropylene (PP), polyethylene (PE), and polyester.

The material is recyclable, waterproof, thermo-moldable, durable and replaces cardboard and resin board, smellless, accepts stamp, reduce workforce and final cost of the resulting products.



WHAT ARE THE APPLICATIONS?

FOR REPLACEMENT OF INSOLE BOARD, CELLULOSE, MDF AND SIMILAR MATERIALS.

- Die-cut insoles.
- Skeleton insoles.
- Shank Board
- Bed cross bar (TUBOX ECOWOOD).



DIE-CUT



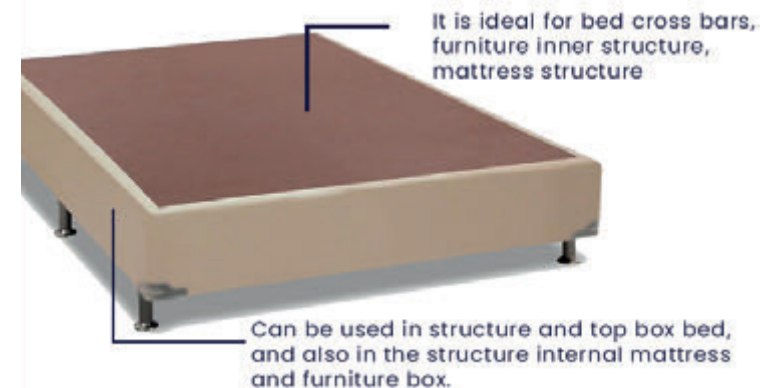
SKELETON



SHANK BOARD



BED CROSS BAR

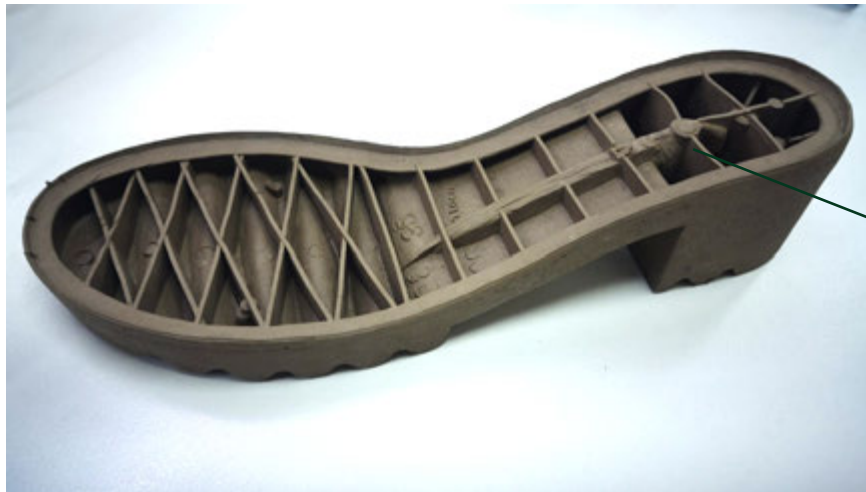


APPLICATION TIPS

HOW TO DEFINE THE THICKNESS THAT THE CUSTOMER NEEDS?

Everything will depend on the type of footwear and sole used, what will define is the type of *ROUBA PESO* of the footwear.

PLATFORM



WALL

CUT IN THE DIRECTION OF THE FABRIC FIBER.

If cut in the opposite direction of the nonwoven fiber, the product has the risk of breaking and losing strength.

This is **very important** that the customer is always informed.

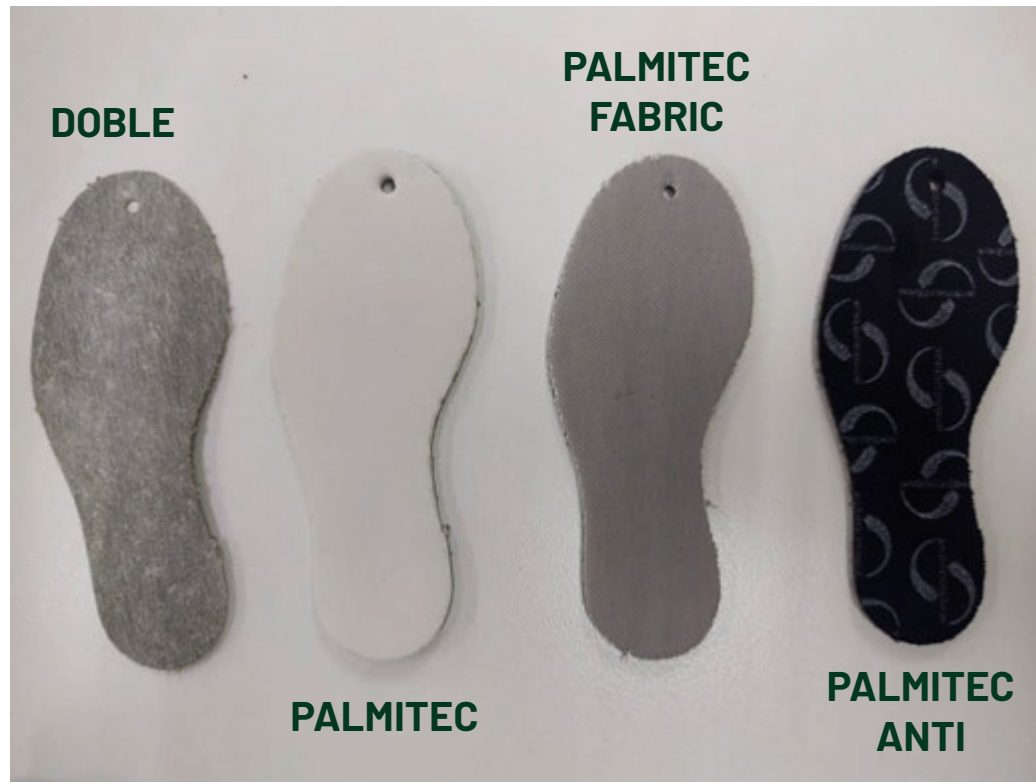
TYPES OF TUBOX

DOBLE: Only sheets with Nonwoven.

PALMITEC: Plastic sheet + EVA.

PALMITEC FABRIC: Plastic sheet + EVA + Fabric.

PALMITEC ANTI: Plastic sheet + EVA + Fabric + Print and antimicrobial.



TUBOX SHANK BOARD

APPLICATION - FEMALE HIGH HEEL SHOES



THICKNESS:

- 1.5mm
- 2.0 mm
- 2.5mm
- 3.0mm

SIZE SHEET:

1m X 1,20m.

TUBOX

insole and counter

EXAMPLES



ECOLOGICAL PRODUCT

RECYCLED AND RECYCLABLE



Sustainable for the pocket and for environment.

RESTRICTED SUBSTANCES FREE

01

● RECYCLABLE MATERIAL

Plastic sheet made from hard-to-recycle compositematerials for the footwear industry.

02

● WATERPROOF

It has a great advantage over cellulose insoles, it is durable, waterproof and does not crumble. Making the shoe much more resistant.

03

● MOLDABLE THERMAL

Very resistant with a high degree of molding.

04

● SMELLESS

Even made from recyclable products has no smell.

05

● ECONOMIC

Cost-effective compared to cardboard and resin and reduce workforce and final cost of the resulting products.

06

● ACCEPTS STAMPS

In this way the customer can put his own identifications.

07

● REVERSE LOGISTICS

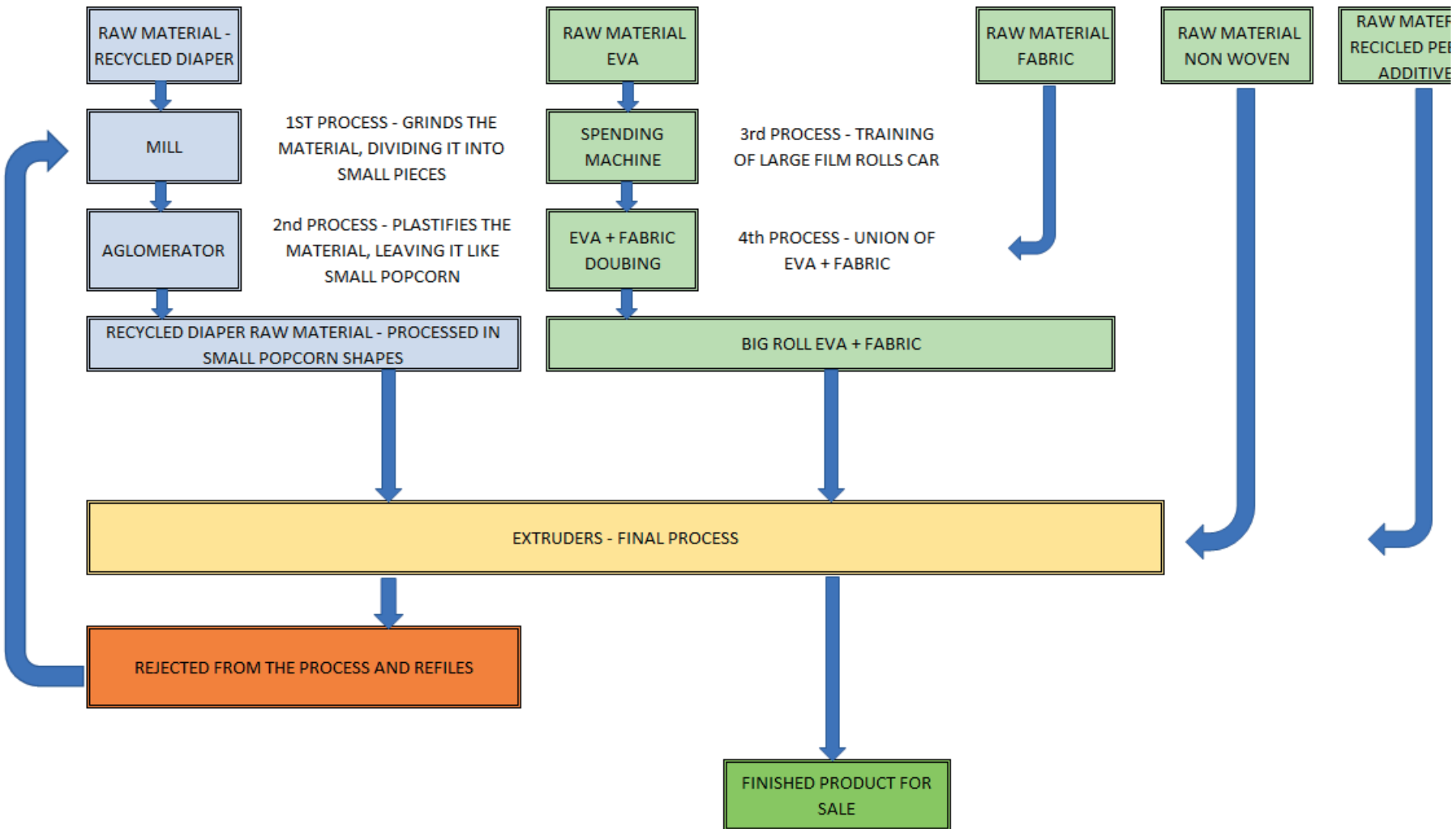
One of the biggest concerns of the Magma group is its commitment to the environment, for this reason, since the beginning of activities, the company seeks to minimize waste and environmental impact through the recycling of all plastic packaging produced by the Magma group factories and stores and the reverse logistics of our clients, as well as recycling waste from other industries.



RECYCLING PROCESS AND FLOWCHART



SIMPLIFIED PROCESS FLOW - EXTRUDED LDPE PLATES



FINAL PRODUCT CONTAINING 94.6% OF RAW MATERIAL FROM MATERIALS RECYCLED:



WE BUY THIS COMPOUND AND WE ALSO USE ALL THE PEBD
PACKAGING THAT IS GENERATED IN OURS
FACTORIES AND STORES.



POST-CONSUMER: ALL TRIMMING PROCESS AND PRODUCTION
REJECTS ARE REUSED
TRIMMING OF THE PRODUCTION PROCESS AFTER GRINDING AND
AGGLUTINATION



FINAL PRODUCT

CERTIFICATION LABELS:



100%
ENERGIA
RENOVÁVEL

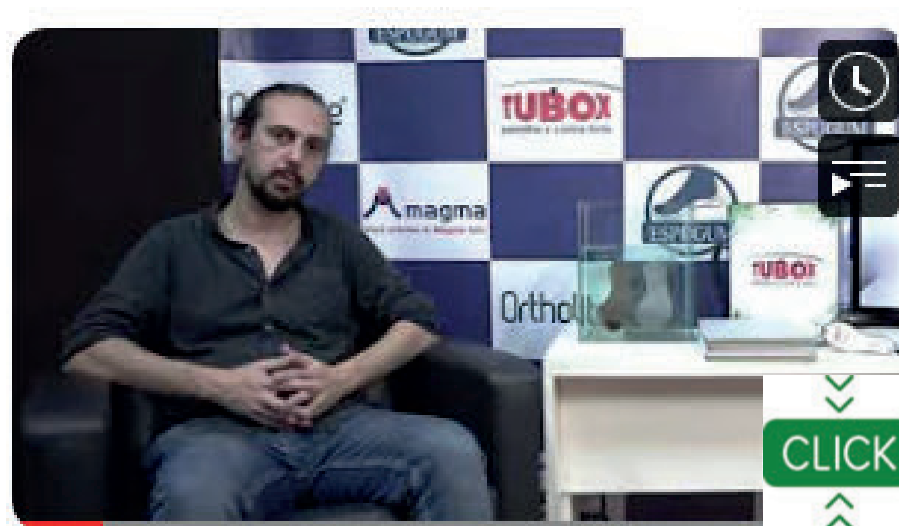
The certification of the Witzler Esco Protocol for the Use of Renewable Energy and the Reduction of Greenhouse Gas Emissions (GHG) ensures that the certified organization uses, in its production chain, energy from a renewable source and with low GHG emissions.



eu**reciclo**

The eureciclo LABEL guarantees that our brand invests in the development of the chain of recycling, through the environmental compensation of our packages

ABOUT TUBOX



Performance & Sustainable insoles - TUBOX

**INSOLES AND COUNTERS
RECYCLED & RECYCLABLE**

CONVERSION OF MEASUREMENTS



	<u>Tubox sheet size</u>
Doble	1,41m X 1,07m (range \pm 0,02m) = 1,50m ² .
<u>PALMITEC FABRIC:</u>	1,38m X 1,09m (range \pm 0,02m) = 1,50m ² .
<u>PALMITEC FABRIC: Plastic sheet + EVA + Fabric.</u>	1,35m X 1,11m (range \pm 0,02m) = 1,50m ² .
<u>PALMITEC ANTI:</u>	1,35m X 1,11m (range \pm 0,02m) = 1,50m ² .
<u>converter tubox de m2 p/ placa</u>	Divide <u>quantity in m2 by 1.5m</u> . Example: 300 m ² \div 1,5m = 200 sheets.
<u>converter tubox de placa p/ m2</u>	Multiply the number of boards by 1.5m. Example: 100 sheets X 1,5 = 150 m ² .
<u>converter preço de tubox placa p/ em m2</u>	Divide the price of the sheet by 1.5m. Example: R\$ 7,50 price of the sheet \div 1,5 = R\$ 5,00 m ²
<u>converter preço tubox m2 p/ placa</u>	Multiply the price of m ² by 1,5. Example: R\$ 3,50 m ² X 1,5 = R\$ 5,25 for sheet.
<u>Quantity per package:</u>	Each package contains 30 m ² = 20 sheets. Example: 30 m ² \div 1,5 = 20 sheets





THANK YOU!